



# GAT MONTHLY MEMBERSHIP PROGRESS REPORT

Results as of: 8/31/2023

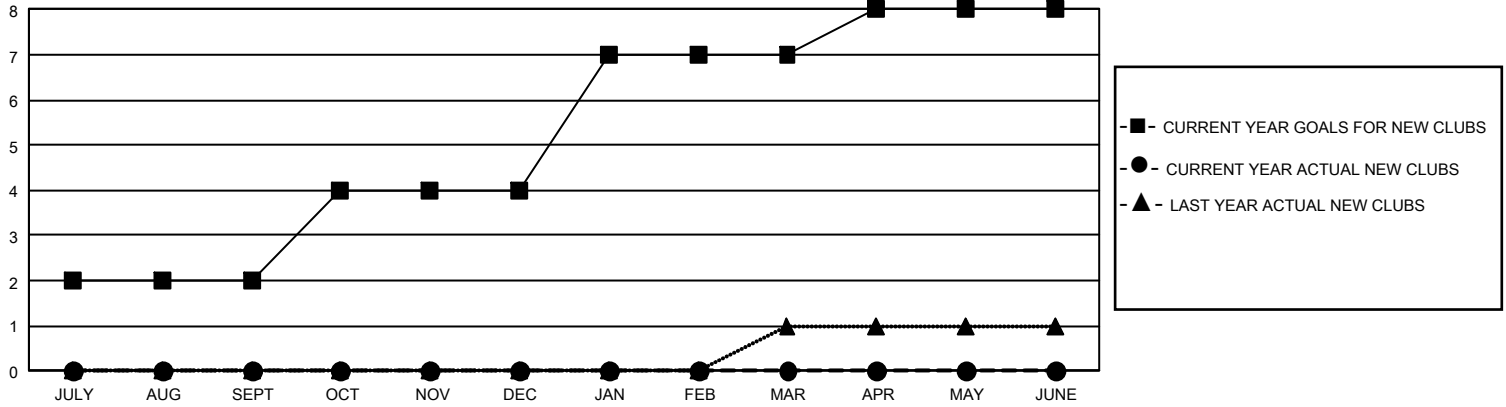
## GMT Constitutional Area 5 - J, Group H

REPORT DOES NOT INCLUDE CLUBS IN UNDISTRICTED AREAS.

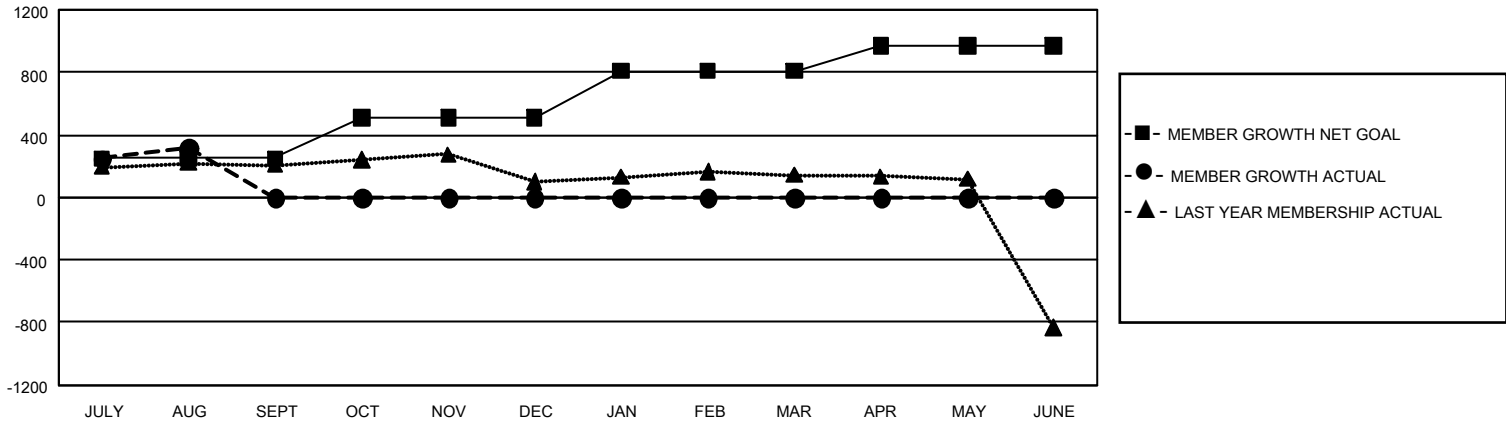
Clubs			
RESULTS FOR 2023-2024			
QUARTER	NEW CLUB GOAL	NEW CLUBS	DROPPED CLUBS
JULY/AUG/SEPT	6	0	0
OCT/NOV/DEC	6	0	0
JAN/FEB/MAR	9	0	0
APR/MAY/JUNE	3	0	0

Members			
RESULTS FOR 2023-2024			
QUARTER	MEMBER GROWTH NET GOAL	MEMBER GROWTH ACTUAL	DROPPED MEMBERS ACTUAL (including transfers)
JULY/AUG/SEPT	250	468	133
OCT/NOV/DEC	260	0	0
JAN/FEB/MAR	300	0	0
APR/MAY/JUNE	160	0	0

GOALS AND ACTUAL NEW CLUBS CUMULATIVE



GOALS AND ACTUAL MEMBERS CUMULATIVE



DROPPED CLUBS: 0	196 CLUBS OF 385 ADDED 1 OR MORE NEW MEMBERS	<u>GENDER DISTRIBUTION</u>	
<u>DROPPED MEMBERS</u>		MALE	13,551 (74.02%)
DECEASED	7	FEMALE	4,755 (25.98%)
CLUB CANCELLED	0	NON BINARY	0 (0.00%)
OTHER	126	PREFER NOT TO ANSWER	0 (0.00%)
TOTAL	133	TOTAL FAMILY UNIT MEMBERS	8,100
	<a href="#">CLICK HERE FOR CUMULATIVE MEMBERSHIP DATA</a>	FAMILY MEMBERS PAYING HALF DUES	4,436